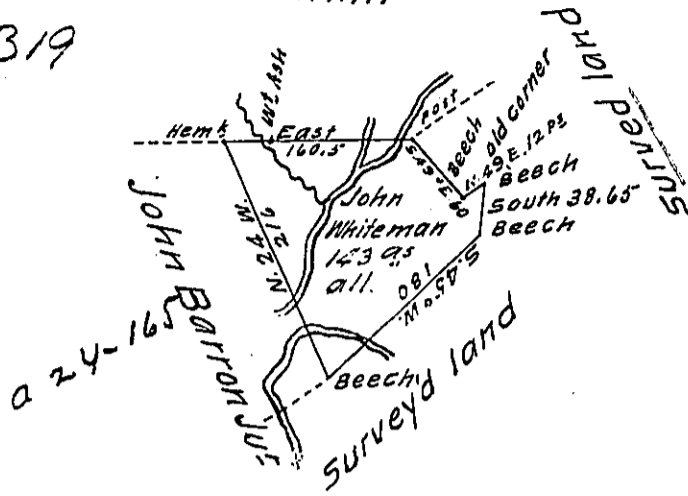


C-194-96

William Smith

P-319



Draught of a tract of land situate in Luzerne County adjoining William Smith & others containing one hundred and forty three acres and the allowance of 6 $\frac{7}{8}$ Ct for roads &c. survey'd to John Whiteman the 18th day June 1794 in pursuance of his warrant dated the 18th day of March A.D. 1794.

Ant^y Crothers D.S.

To Dan^l Brodhead Esq^r }
 Surveyor Gen^l

IN TESTIMONY that the above is a copy of the original remaining on file in the Department of Internal Affairs of Pennsylvania, made conformably to an Act of Assembly approved the 16th day of February, 1833, I have hereunto set my Hand and caused the Seal of said Department to be affixed at Harrisburg, this twenty ninth day of December 1911

Henry Houch
 Secretary of Internal Affairs.